

22 by 2022

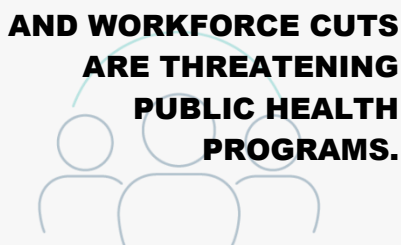
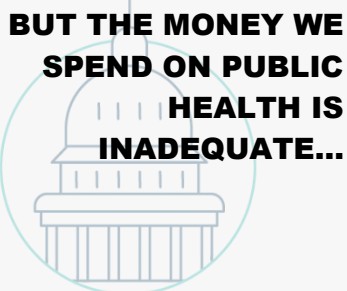
A strong CDC is critical to a strong America.

Congress Must Act to Increase Funding for CDC 22% by 2022

22 by 22 is a campaign urging Congress to increase funding for the Centers for Disease Control and Prevention (CDC) 22 percent by fiscal year 2022 (FY22). The CDC's ***Bold Promise to the Nation*** highlights the importance of the agency in protecting and promoting health. By increasing investments in five core capabilities (data, laboratories, workforce, domestic and global preparedness) CDC and its state and local public health partners will be better equipped to save lives every day by promoting optimal health for all, protecting against disease, and helping to prevent other crises. With the many health threats and challenges our nation faces today, now is the time to adequately fund CDC.

Increasing CDC's budget is critical to build healthier, more resilient communities and is the only way to ensure our nation's health is protected from communicable and non-communicable disease threats.

Why 22 by 22?



While American life expectancy increased for the first time in four years, more work must be done to further prevent heart disease, stroke, diabetes, suicides, and drug overdoses. CDC funds state and local public health efforts to prevent these diseases—and more, not less, is needed.

Federal investment in public health has not kept pace with inflation nor the considerable challenges posed by infectious disease outbreaks, extreme weather events, and other emergencies, such as the Flint water crisis. According to a 2017 report by the Trust for America's Health, of the \$3.5 trillion spent annually on health care, only three percent of all health spending is directed to public health, which includes federal, state, and local resources. That equates to an average of \$280 per person. By contrast, total health care spending is \$10,739 per person.

Reductions in the public health workforce strain the ability of state and local public health departments to protect and promote population health. From 2012-2016, the estimated number of full-time health agency employees decreased by three percent. By 2020, the percentage of health agency employees who are eligible for retirement will reach 25 percent.

The public health community requests that Congress provide \$8.3 billion in FY21—an increase of \$326 million in discretionary funding from FY20—to build on the momentum of FY20 to provide predictable, sustained, and increased funding pattern needed to address several public health priorities.

Fiscal Year	Funding Recommendation
2021	\$8.3 billion
2022	\$8.8 billion

A \$826 million total funding increase over two years will allow CDC to better implement effective programs to address, federal, state, and local public health priorities, such as:

PREVENTING DRUG OVERDOSES

More than 192 Americans die every day from opioid-related drug overdoses. Increased investment in prevention is needed to curb this dangerous trend.

SAVING LIVES AND CURBING COSTS THROUGH CHRONIC DISEASE PREVENTION

Chronic diseases are the leading causes of death and disability. Preventable illnesses and injuries from smoking, lack of physical activity, inadequate nutrition, and harmful environmental exposures are literally killing Americans every day.

ENHANCING DISASTER PREPAREDNESS, RESPONSE, AND RECOVERY

From 2015-2019, the cost for weather-related disasters exceeded \$525 billion. Public health, in coordination with emergency preparedness, plays a critical role in disaster prevention, response, and recovery—and more is needed.

PUBLIC HEALTH DATA AND SYSTEMS MODERNIZATION

Public health data systems are antiquated, in dire need of upgrades, and rely on obsolete surveillance methods. As public health threats continue to evolve, so must the public health's surveillance system.

COMBATING INFECTIOUS DISEASES

Communicable disease control is a core function of the CDC and other governmental public health entities. The United States is experiencing daily infectious disease outbreaks and sexually transmitted diseases are rising at alarming rates. In 2018, reported cases of gonorrhea, syphilis, and chlamydia increased for the fifth consecutive year. These diseases, in addition to emerging infectious outbreaks, such as Zika, Ebola, and MERS, drain resources and challenge an already fragile public health infrastructure.

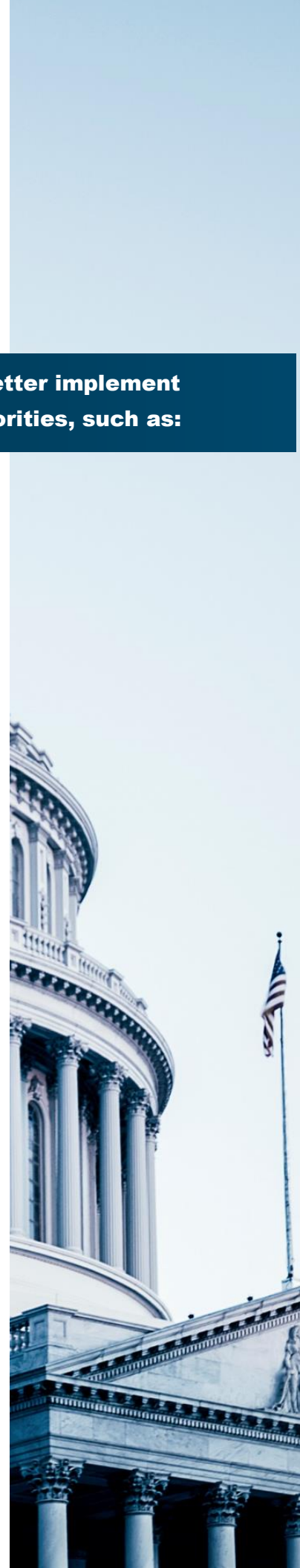
PREVENTING AND REMEDIATING ENVIRONMENTAL HEALTH HAZARDS

Complex emergencies associated with drinking water, sanitation, and hygiene trigger immediate responses due to the potential for community-wide harm and significant economic loss. Public health plays a role in preventing and responding to these crises.

ENDING THE HIV EPIDEMIC

To reduce new HIV infections in five years by 75 percent increased investments are needed for communities to diagnose, treat, prevent, and respond quickly to new HIV outbreaks.

For more information about 22x22 contact Carolyn Mullen SVP of Government Affairs and Public Relations at the Association of State and Territorial Health Officials at cmullen@astho.org



The 22x22 campaign is endorsed by 100 organizations:

Academy of Nutrition and Dietetics
AcademyHealth
Adult Congenital Heart Association
Advocates for Better Children's Diets
American Academy of Family Physicians
American Association for Dental Research
American Association for the Study of Liver Diseases
American Association of Colleges of Pharmacy
American Association of Poison Control Centers
American Cancer Society Cancer Action Network
American College of Preventive Medicine
American Diabetes Association
American Heart Association
American Lung Association
American Public Health Association
American School Health Association
American Sexual Health Association
American Society for Microbiology
American Society of Hematology
Arthritis Foundation
Asian and Pacific Islander American Health Forum
Association of Women's Health, Obstetric and Neonatal Nurses
Association for Professionals in Infection Control and Epidemiology
Association of American Veterinary Medical Colleges
Association of Immunization Managers
Association of Maternal & Child Health Programs
Association of Public Health Laboratories
Association of State and Territorial Dental Directors
Association of State and Territorial Health Officials
Association of University Centers on Disabilities (AUCD)
Autism Society of America
Big Cities Health Coalition
Campaign for Tobacco-Free Kids
Central Michigan District Health Department
Children's Hospital Colorado
ClearWay Minnesota
Coalition for Health Funding
Colorado Association of Local Public Health Officials
Cooley's Anemia Foundation
Council of State and Territorial Epidemiologists
Counter Tools
Epilepsy Foundation
GlaxoSmithKline Consumer Healthcare
Health Resources in Action
Healthy Schools Network
Hogg Foundation for Mental Health
Immunize Nevada
Impetus - Let's Get Started LLC
Infectious Diseases Society of America
Intermountain Public Health Consulting, LLC
Jeffrey Modell Foundation
Kansas Association of Local Health Departments
Kymm Ballard Consulting
LIVESTRONG
Maine State Breastfeeding Coalition
March of Dimes
Maryland Public Health Association
Michigan Association for Local Public Health
NACDD
NAPHSIS
NASADAD
NASTAD
National Association for Health and Fitness
National Association of County and City Health Officials
National Association of Epilepsy Centers
National Association of School Nurses
National Coalition of STD Directors
National Hemophilia Foundation
National Network of Public Health Institutes
National Recreation and Parks Association
North American Association of Central Cancer Registries
Pitkin County Public Health
Prevent Blindness
Prevent Cancer Foundation
Prevention Institute
Public Health Institute
Redstone Global Center for Prevention and Wellness
Research!America
Respiratory Health Association
RMC Health
Sage Transformations
SAS
School-Based Health Alliance
Signature Pediatrics
Society for Healthcare Epidemiology of America
Society for Public Health Education
Society of State Leaders of Health and Physical Education
Stewards of Change
The AIDS Institute
The Ayuda Foundation/Island Girl Power GUAM
The Immunization Partnership
The Institute for Family Health/Bronx Health REACH
The National REACH Coalition
The Society for Healthcare Epidemiology of America
Tobacco Control Network
Triage Cancer
Trust for America's Health
West Virginia Breastfeeding Alliance
WomenHeart
YMCA of the USA

